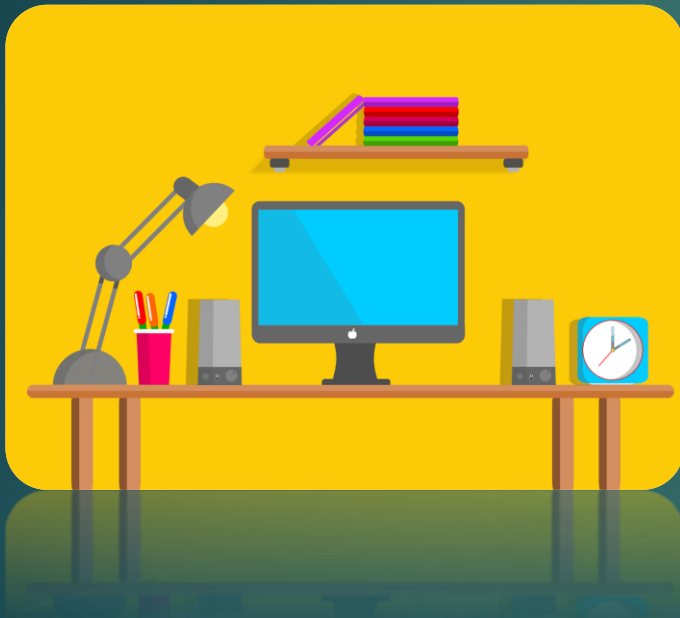




PSAT Score Interpretation Night

North Atlanta High School
An International Baccalaureate School
Wednesday, January 12, 2022

INFORMATION SESSION AGENDA:



- Purpose and benefits of taking the PSAT
- Upcoming Spring 2022 test-prep events at NAHS
- Guest speaker Heather Meadows (premium tutor w/Applerouth Tutoring):
 - PSAT score report overview
 - Using the PSAT to prepare for college admissions
 - Planning for the official SAT & ACT
- Q & A

WHY?

the PSAT?



Get an idea of how students perform in a high-pressure testing situation



The test covers the same knowledge and skills as the Official SAT



Check the status of student progress in meeting college readiness skill benchmarks



Identifies student's areas of strength and areas with most opportunity for improvement

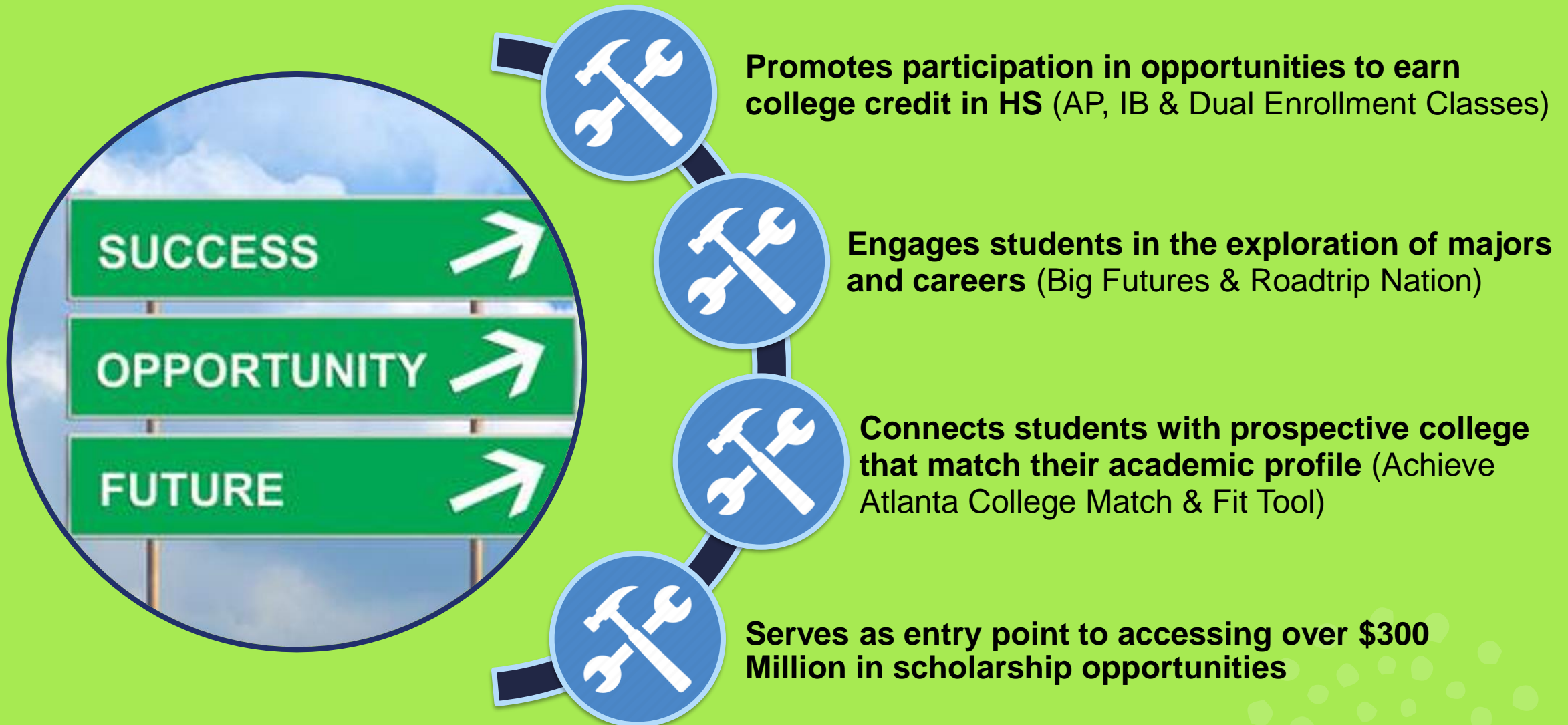


Get personalized SAT practice on Khan Academy



Create a test-prep plan to help students' score their best when it counts

The PSAT is the perfect tool to jump start your college and career planning!



Upcoming Test Prep Events: Spring 2022



10th and 11th Grade Counselor Classroom Lessons

(Jan 18 – Feb 16)

- PSAT Score Report Interpretation
- Identifying Individual Testing Areas of Strength and Opportunities to Improve
- Synch PSAT Scores with Khan Academy Account
- Planning for the Official SAT & ACT
- Test Prep Tools, Strategies and Opportunities

Applerouth Practice Tests at NAHS

Register Online at Applerouth.com/signup



Mock SAT

Saturday, January 22
Event Code: M464635



SAT/ACT Diagnostic Test

Saturday, February 26
Event Code: M464637



Mock ACT

Saturday, March 5
Event Code: M464638

Prep Event for Class of 2023 JUNIORS Only!

Mock SAT

February 5
9:00am - 12:45pm

Event Code:
M464636



APS SAT Day is coming! Wednesday, March 2nd

- ALL North Atlanta Juniors will take the official SAT (for free) during the school day.
- A FREE SAT practice test has been set up and being offered exclusively FOR NAHS JUNIOR!!
- Register TODAY at [Applerouth.com/signup](https://www.applerouth.com/signup)!!!!

Upcoming ACT/SAT Events Spring 2022



MARK YOUR CALENDARS!

- Jan 22: Applerouth Practice SAT at NAHS
- Feb 5: Applerouth Practice SAT at NAHS for JUNIORS ONLY
- Feb 12: Official ACT (last ACT for Dual Enrollment 2022-23)
- Feb 26: Applerouth Practice SAT/ACT Combo at NAHS
- Mar 2: APS Official SAT School Day for Juniors
- Mar 5: Applerouth Practice ACT at NAHS
- Mar 12: Official SAT (last SAT for Dual Enrollment 2022-23)
- Apr 2: Official ACT
- May 7: Official SAT
- June 4: Official SAT
- June 11: Official ACT
- July 16: Official ACT

2022 PSAT Score Report Interpretation Materials & Resources



Your Grade Level School Counselors' Google Classroom

- Ms Boykin's 10th Grade Google Classroom Code: **JPJHGW**
- Mr Genwright's 11th Grade Google Classroom Code: **IMEMWFA**



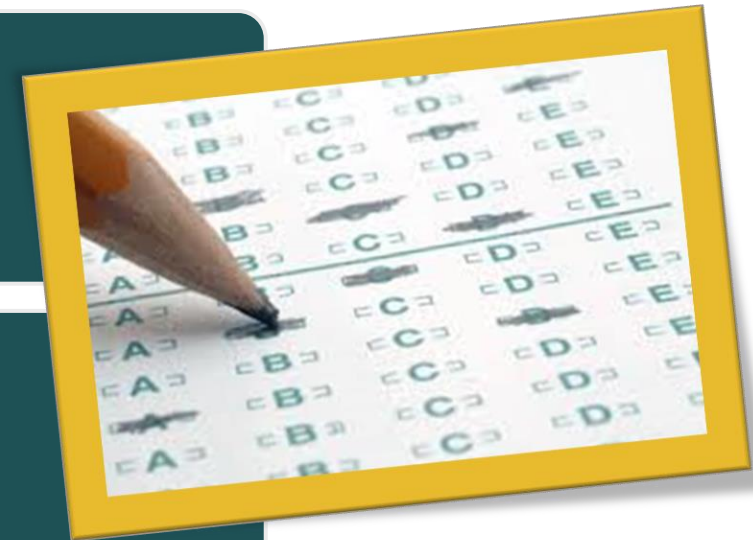
Shared Google Drive Folder

Click: [Spring 2022 PSAT Google Folder](#)



NAHS Counseling Website

Click: [NAHS Counseling Website](#)



Understanding Your PSAT/NMSQT Scores

Heather Meadows
Premium Tutor

Your Score Report

What it tells you about your college prep readiness



Looking for Patterns in the Test Report: Time management

If your accuracy starts to dip towards the end of the test, it means one of two things:

- **Time management issues**
- **Mental fatigue (this is particularly prevalent in the Reading section, since it is so long)**

Both can be helped with steady practice!

Looking for patterns in the test report: EBRW-specific

Large error blocks in Reading/Writing might indicate a lack of interest or confidence in content area. Targeted practice will help!

The PSAT and SAT are reading-centric tests; you probably encountered at least one set of paired passages and one very challenging social sciences passages.

It's also worth noting that the reading on the ACT is faster-paced, but more consistent in its difficulty level (and the passages are shorter).

Looking for patterns in the test report: Math-centric

Generally speaking, the Math (No-Calculator) section requires students to do long-form multiplication and division and deal with exponents, radicals, and factoring by hand. If your accuracy rate was low, it's worth considering brushing up on these.

The Calculator-enabled Math section is all about algebraic modeling and functions! This is a word-problem-heavy section. Look at the difficulty level of the problems you missed - if they're mostly 1- or 2- block questions, it's likely that you're not reading carefully enough.

Digging Deeper: PSAT Math Content Areas

The College Board groups the PSAT Math content areas into three main categories:

1

Heart of Algebra

solving functions, linear equations and inequalities; graphing linear functions, equations and inequalities; solving systems of linear equations and inequalities; modeling linear relationships; linear word problems

2

Passport to Advanced Math

quadratic, radical and exponential equations and word problems; polynomials; factoring; non-linear functions and graphs; modeling exponential relationships

3

Problem Solving and Data Analysis

ratios, proportions and percents; unit conversion; tables, scatterplots, and graphs; linear and exponential growth and decay; inferring from data; center, spread and share of data sets; other introductory statistics concepts

Digging Deeper: PSAT Math Content Areas

In addition to those three big areas, the PSAT features a few questions each on:

Geometry

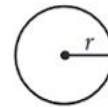
area, volume, perimeter, angles, polygons. Most of these are in word problem format.

Trigonometry

right triangles, SOH-CAH-TOA

You'll get a reference guide for formulas!

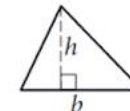
REFERENCE



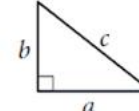
$$A = \pi r^2$$
$$C = 2\pi r$$



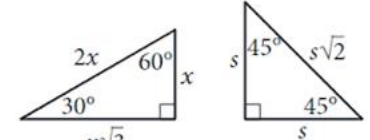
$$A = \ell w$$



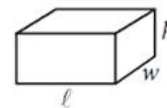
$$A = \frac{1}{2}bh$$



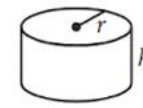
$$c^2 = a^2 + b^2$$



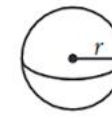
Special Right Triangles



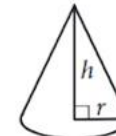
$$V = \ell wh$$



$$V = \pi r^2 h$$



$$V = \frac{4}{3}\pi r^3$$



$$V = \frac{1}{3}\pi r^2 h$$



$$V = \frac{1}{3}\ell wh$$

The number of degrees of arc in a circle is 360.

The number of radians of arc in a circle is 2π

The sum of the measures in degrees of the angles of a triangle is 180.

The PSAT and College Admissions

How the PSAT fits in



How important is the PSAT?

For most students, the PSAT scores have no direct impact on their college admissions process. Colleges never receive students' PSAT scores, and National Merit affects a tiny percentage of students.

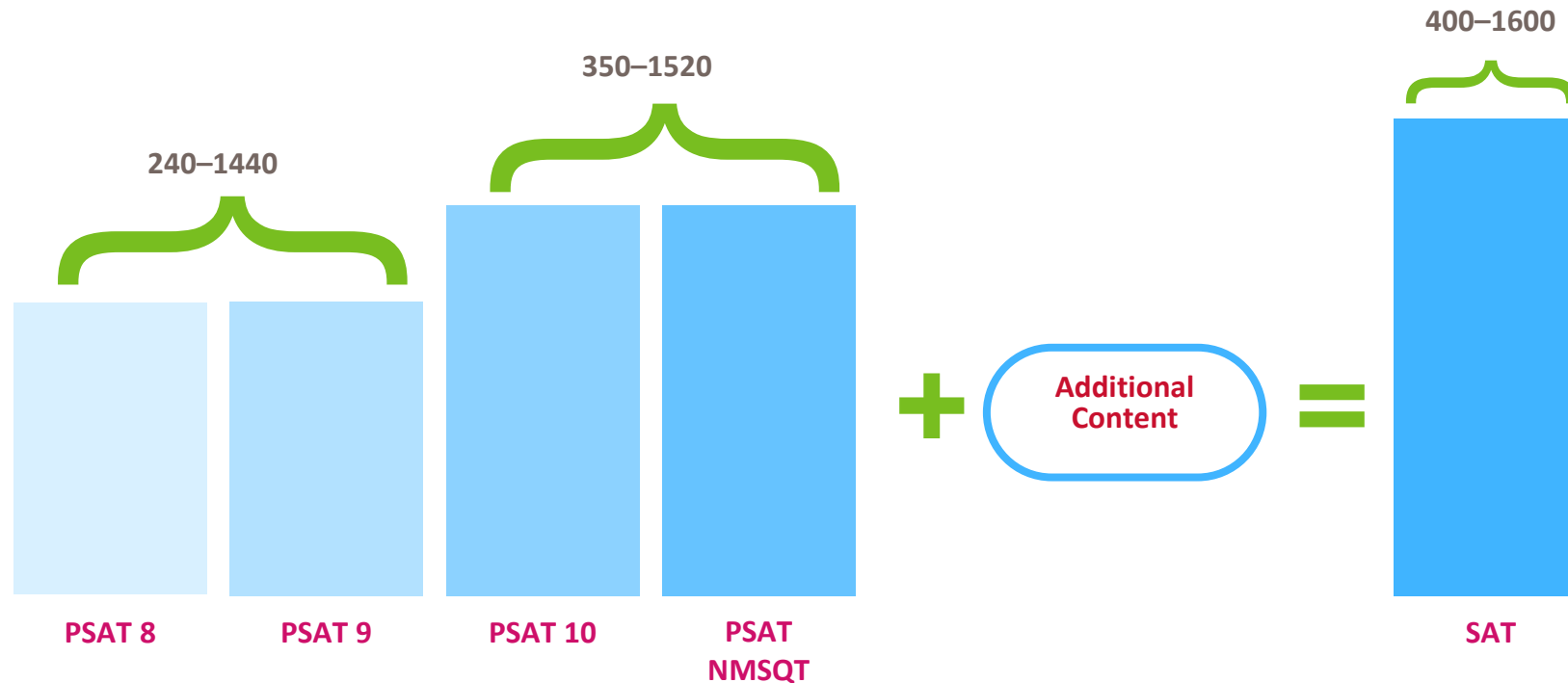
However, the PSAT is a great practice run for the SAT and can tell you a lot about how you would perform on that test.



The PSAT was written to pair with the SAT; although the SAT is longer and more difficult, PSAT scores can give a general* sense of a student's potential SAT score.

Vertical scaling falls apart at the high end of the scoring curve, so it's less useful in predicting a high-scorer's SAT score.

Vertical Scaling of PSAT and SAT



As content gets harder, the possible point total increases.

PSAT/SAT and ACT are more similar than ever

● More advanced reading

● More math word problems

 CollegeBoard
PSAT

achieve
more
SAT®

- Reading skills
- English and Grammar skills
- Science graph reading and interpretation
- Algebra, stats, some geometry

● More advanced science

● More advanced math

The ACT®


Using the PSAT to decide between SAT and ACT

- Take a practice ACT and use your PSAT scores for a baseline comparison. If you're a high scorer, you may want to do a practice SAT as well.
- By converting ACT scores to the SAT/PSAT scale, you can compare apples to apples:



If your scores are different by 70 SAT points or more, that means you have a significant strength in one test. Prep for the higher-scoring test.

If your scores are within 60 SAT points of each other, then you are within the margin of error for each test. Choose the one you'd like to focus on.



Next Steps

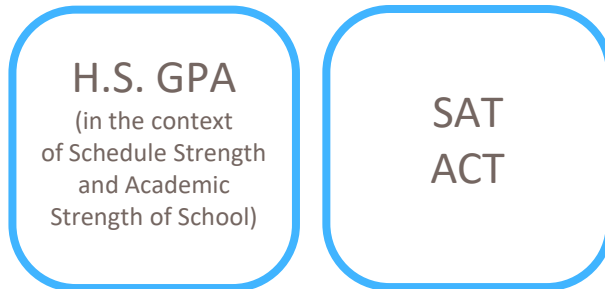
The SAT, ACT, and Admissions



The admissions process

Academic Index:

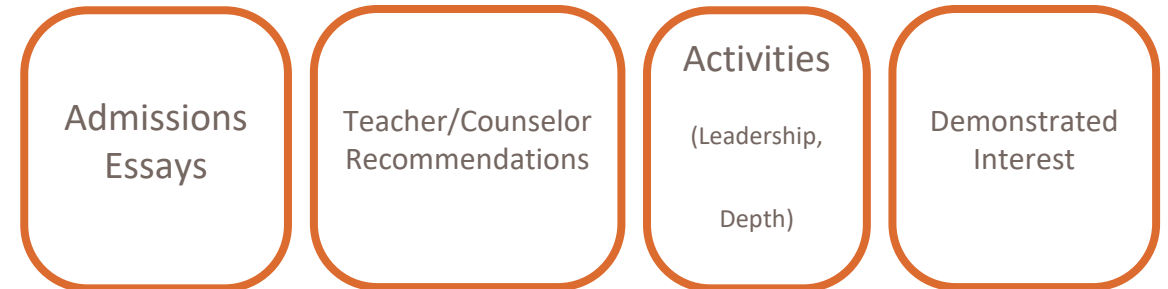
Quantitative components



HOW will they read your application?

Academic Index:

Qualitative components



The packaging of the application—Is there
a cohesive story?

Today the SAT and ACT are universally accepted



Colleges will accept either test without prejudice.

Testing is typically a junior year activity

Some students may need SAT or ACT scores early, while others should wait. Here's a short guide:

Sophomores:

You need the scores for AP courses, dual enrollment, or athletic recruitment.

Even if you test sophomore year for these reasons, you can and should still take an SAT/ACT later for college admissions!

Fall of Junior Year:

You are in advanced math and English and would like to get it done with!

Spring of Junior Year:

You are in Algebra 2 in Junior year, or you have commitments in the fall.

Students can continue to take the ACT and SAT for college admissions into their senior year (Sept/Oct for early admissions; Nov/Dec for regular admissions), but you shouldn't wait until senior year to start.

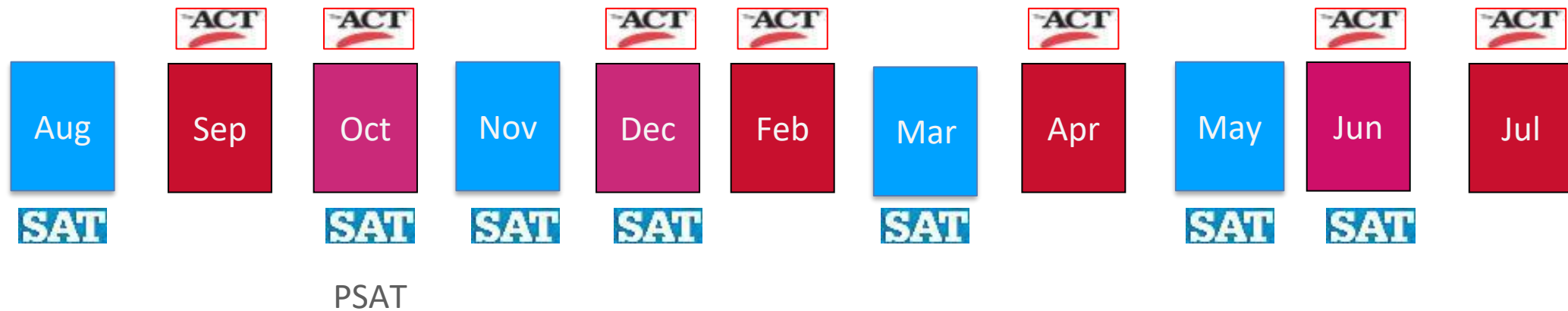
The importance of multiple test dates

It's a good idea to plan for multiple test dates; we recommend families plan for three separate testings of the **same** test. Here's why:

- **Superscoring potential**
- **Gains in confidence over time**
- **Negates any test difficulty or scoring fluctuation**
- **Allows student and tutor to set incremental goals**

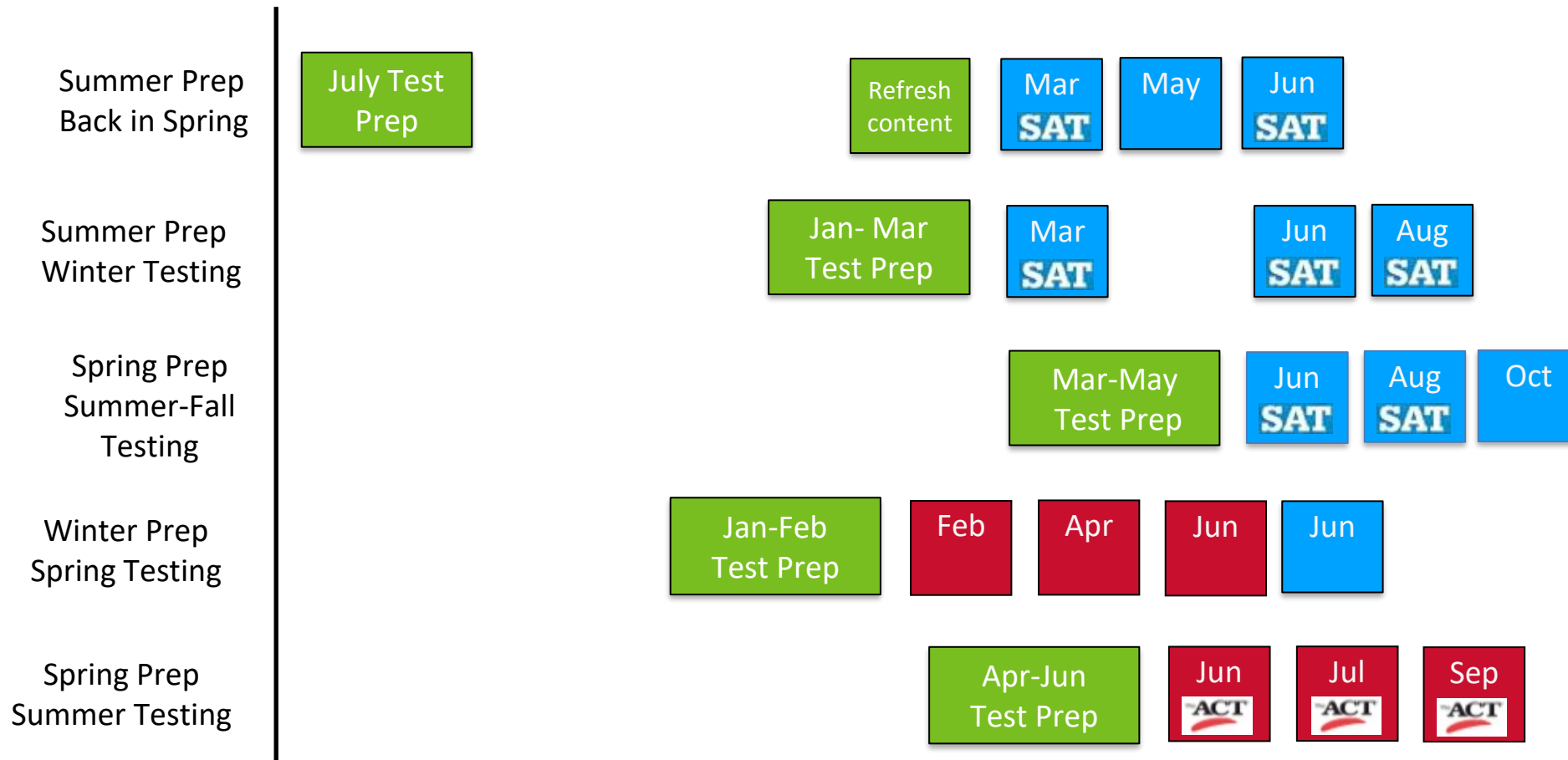
Plan for three and stop once you reach your goal!

You have lots of opportunities to take either test!



Remember that registration for any given test (except for PSAT) closes about a month before the test date. Registering earlier than that is smart - the earlier you register, the more likely you'll be able to take the test at your first-choice location.

Choose a testing timeline that works for your student



How to register for the SAT and ACT

To register for the SAT, log on to <http://www.collegeboard.org> and click **“Register for the SAT.”** You will have to create a CollegeBoard account if you do not already have one.



To register for the ACT, log on to <http://www.act.org> and click **“Register Now for the ACT.”** You will have to create an ACT account if you do not already have one.



How to secure accommodations

If your student needs accommodations for either the SAT or ACT, you must work with your student's school guidance counselor or disabilities coordinator to submit the correct paperwork.



If your student plans to take the **SAT** multiple times with accommodations, you only have to go through the process once—the **accommodations follow your student** through any SAT, AP exam or PSAT.

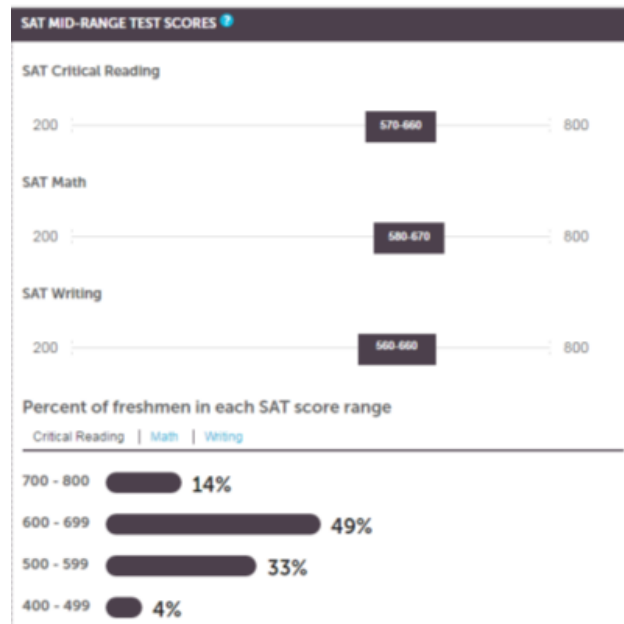


However, you have to **re-apply for accommodations for every ACT** administration your student plans to sit for. Be aware that it can take some time to process, and don't leave registration until the last minute!

Colleges cannot see when a student has taken a test with accommodations—it's the law!

Set realistic goals: Find score ranges online

Use the College Board or Applerouth site to see how your scores compare to other applicants



Top 25%

Middle 50%

Bottom 25%

Your competitive set

Remember that the bottom quartile is predominately “hooked” applicants (i.e., athletes), not straight academic admits. The median score for unhooked applicants is closer to the right side of the middle 50% range.

Our Services

SAT & ACT prep (online,
private, group)

AP prep

HS subject assistance

Study Skills



Helping prepare students for higher scores and grades since 2001



Q&A

Applerouth Practice Tests at NAHS

Register Online at Applerouth.com/signup



Mock SAT

Saturday, January 22
Event Code: **M464635**



SAT/ACT Diagnostic Test

Saturday, February 26
Event Code: **M464637**



Mock ACT

Saturday, March 5
Event Code: **M464638**

2022 PSAT Score Report Interpretation Materials & Resources



Your Grade Level School Counselors' Google Classroom

- Ms Boykin's 10th Grade Google Classroom Code: **JPJHGW**
- Mr Genwright's 11th Grade Google Classroom Code: **IMEMWFA**



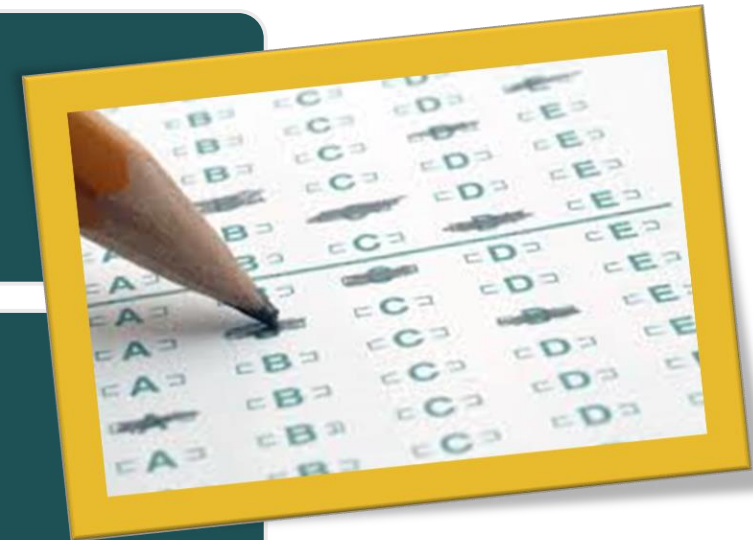
Shared Google Drive Folder

Click: [Spring 2022 PSAT Google Folder](#)



NAHS Counseling Website

Click: [NAHS Counseling Website](#)



Contact Information:



10th Grade Counselor

- Kaye Boykin
- KBoykin@apsk12.org
- Remind: @7EB7A2K



11th Grade Counselor

- Marc Genwright
- MGenwright@apsk12.org
- Student Remind: @9ahgkd
- Parent Remind: @bb4ak84



Dual Enrollment Counselor

- Shellie Marino
- Shellie.Marino@apsk12.org



NAHS Counseling Website

- [NAHS Counseling](#)